



Lyndhurst Dale Road South
Darley Dale, Matlock, DE4 2EU
Guide Price £300,000



Lyndhurst Dale Road South

Darley Dale, Matlock, DE4 2EU

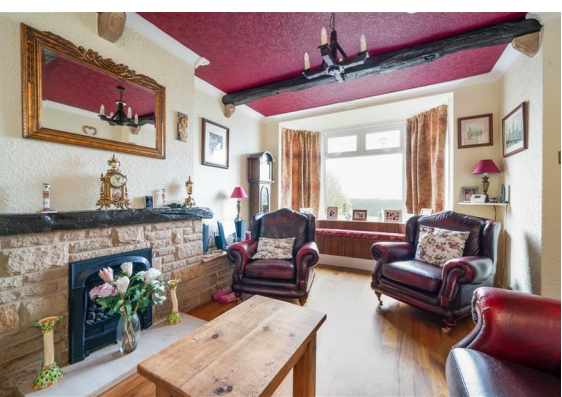
£300,000 - £325,000 (Guide price)
Located close to local amenities, this 3 bedroom stone built detached family home features 1140 sqft of living accommodation over two storeys and offers opportunity to cosmetically update internally. Benefitting from gardens to the front and rear, the property also has off street parking to the rear and views of the surrounding countryside.

The ground floor comprises; Entrance hallway, front aspect living room with bay window and gas fireplace, formal dining room and solid wood kitchen with utility area, separate WC.

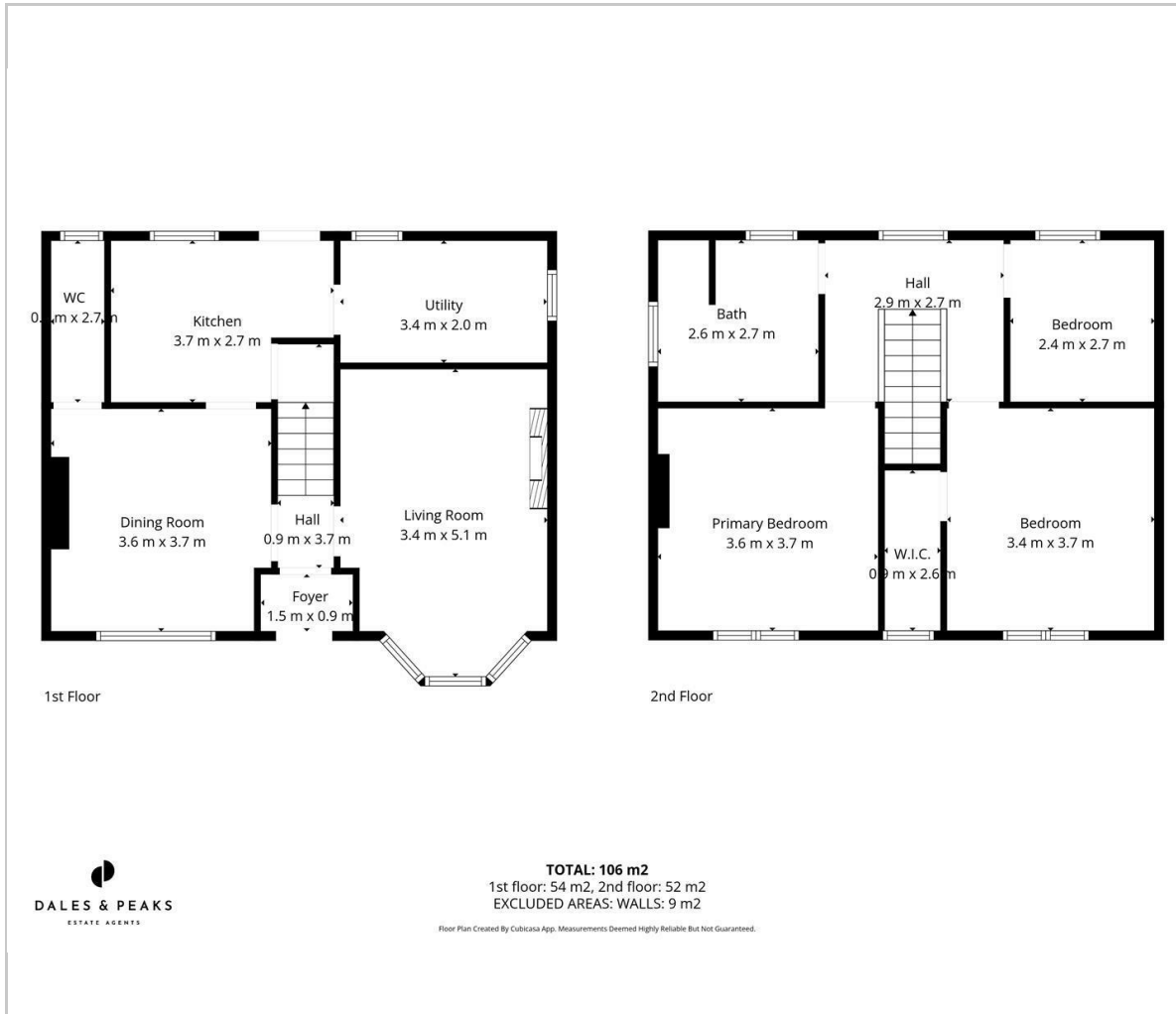
The first floor comprises; Two front aspect double bedrooms, single bedroom and bathroom.

Dales and Peaks ForwardMove
- Please read

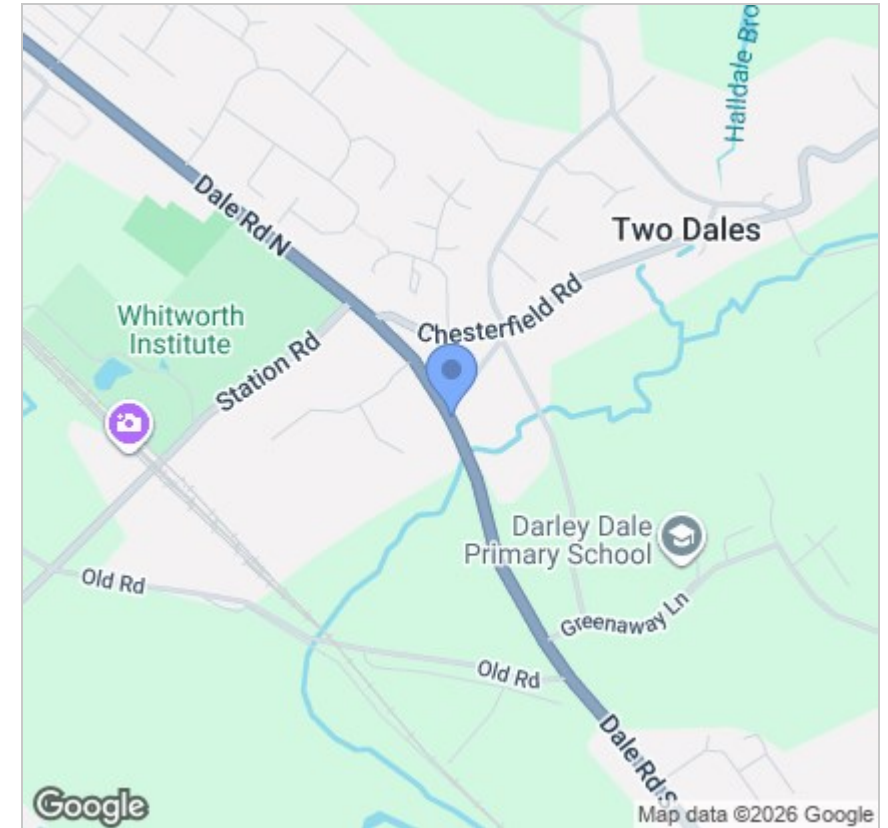




Floor Plan



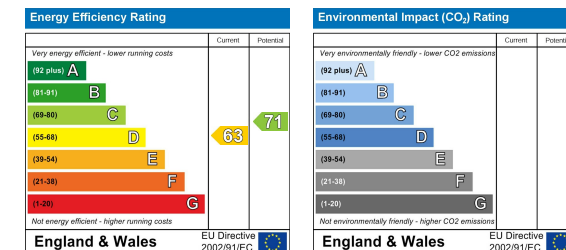
Area Map



Viewing

Please contact our Chesterfield Office on 01246 567540 if you wish to arrange a viewing appointment for this property or require further information.

Energy Efficiency Graph



These particulars, whilst believed to be accurate are set out as a general outline only for guidance and do not constitute any part of an offer or contract. Intending purchasers should not rely on them as statements of representation of fact, but must satisfy themselves by inspection or otherwise as to their accuracy. No person in this firm's employment has the authority to make or give any representation or warranty in respect of the property.



131 Chatsworth Road, Chesterfield, Derbyshire, S40 2AP
 T: 01246 567540

E: info@dalesandpeaks.co.uk
 www.dalesandpeaks.co.uk